

January 2022

# LANARK COUNTY'S CLIMATE NEWSLETTER

January 2022





**NEWSLETTER CONTENTS**

**The Climate Action Plan ..... 3**

    The Milestone Process ..... 3

        Status ..... 4

    Climate Action Committee ..... 4

        Climate Initiatives Dashboard ..... 4

        Climate Actions Long List ..... 5

**Climate Action Outreach ..... 6**

    Green Economy Workshop Series ..... 6

    Facebook Page ..... 7

    Lunch And Learn: Chamber Of Commerce ..... 7

    Climate Network Lanark (CNL) ..... 7

**Climate Action Programs ..... 8**

    Sustainably.eco ..... 8

    One Million Trees Program ..... 8

    Local Municipal Electric Vehicle Program ..... 9

    Insulate Lanark ..... 9

    Alternative Land Use Service (ALUS) ..... 10

**Climate Action Initiatives ..... 10**

    Sustainable Kingston Innovation Award ..... 10

    Electric Corporate Fleet ..... 11

    Cabinscape Project Sinkhouse ..... 11

    LDD Moth ..... 11

    FoodCycler ..... 13

    Plastic Reduction ..... 13

    Bring Your Reusable Bag (BYRB) Sticker ..... 14

    Vegetation Management Pollinator Habitat ..... 14

    Bicycle Month ..... 14

Look for these symbols to indicate updates or new information:



UPDATE



NEW

## THE CLIMATE ACTION PLAN

Lanark County is developing a **Climate Action Plan (CAP)** to reduce corporate and community **greenhouse gas (GHG)** emissions. This plan will engage with the community and a variety of stakeholders to help prepare everyone for a changing climate. This plan represents the first step in creating an integrated approach to mitigating the impacts of climate change throughout the County of Lanark. The final objective of the CAP is to reduce GHG emissions by targeting emissions within the corporation and the community.

## THE MILESTONE PROCESS

Lanark County has joined the [Partners for Climate Protection \(PCP\)](#) Program in partnership with the [Federation of Canadian Municipalities \(FCM\)](#). PCP is a network of over 450 Canadian municipal governments that have committed to reducing greenhouse gases (GHG) and acting on climate change. The Climate Action Plan is developed through PCP's five-step milestone framework:

1. Establishing a GHG inventory and forecast
2. Set emissions reduction targets
3. Develop Climate Change Action Plans
4. Implement the local action plans
5. Monitor progress and report on results

**STATUS**



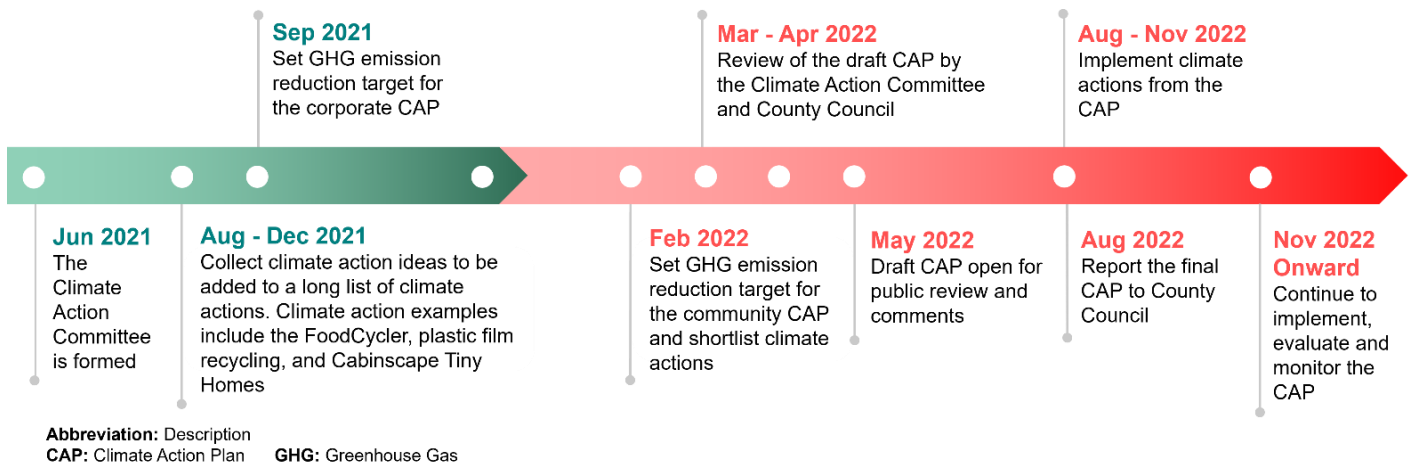
Corporate: **Milestone 3**  
 Community: **Milestone 2**

**CLIMATE ACTION COMMITTEE**

Lanark County has formed a **Climate Action Committee**. The committee will provide strategic direction to the Climate Action Plan, and aid in engaging all stakeholders to provide input and recommendations to the Climate Action Plan. The Climate Action Committee includes representatives from all lower-tier municipalities, Smiths Falls, and Climate Network Lanark.



The timeline (below) outlines the goals and dates of the Climate Action Committee and the Climate Action Plan from now until the end of 2022.

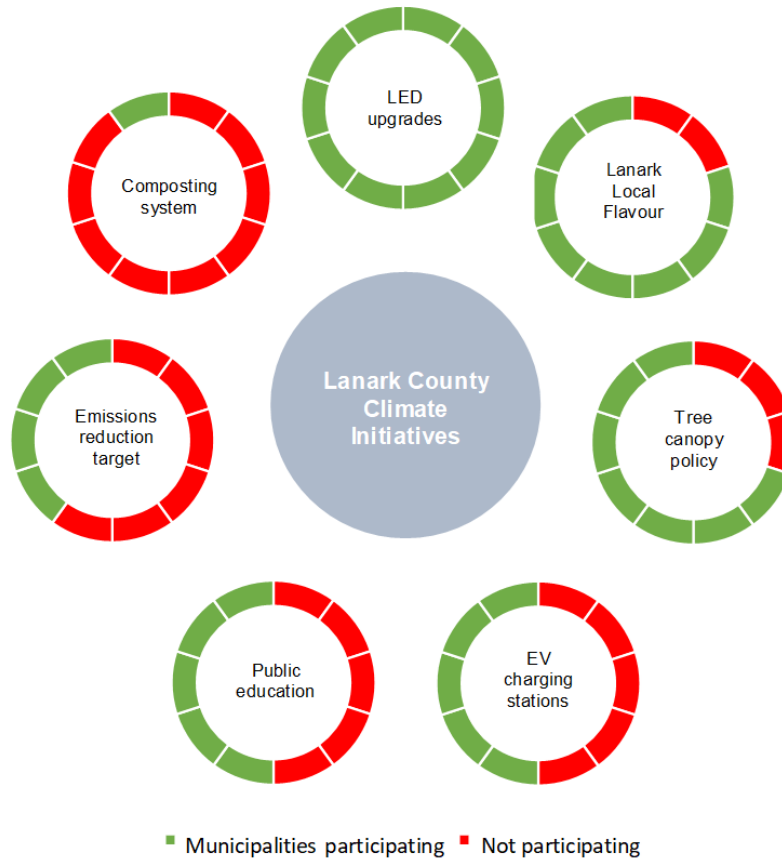


**CLIMATE INITIATIVES DASHBOARD**

Check out the [Climate Initiatives Dashboard](#), a guide to local climate initiatives in Lanark County and Smiths Falls. The dashboard summarizes local climate initiatives into key sectors, and includes local climate initiatives such as public education, active transportation, and setting emissions reduction targets. The dashboard can be used to

January 2022

locate electric vehicle charging stations and trails throughout Lanark County and Smiths Falls. New information will be added to the dashboard as needed.



## CLIMATE ACTIONS LONG LIST

The Climate Action Committee has developed a **long list of climate actions** to reduce greenhouse gas emissions in Lanark County. The climate actions long list identifies potential climate actions by key sectors (e.g., corporate, buildings and energy, transportation, food/land, planning, and waste). The actions within the list are organized by their potential to reduce greenhouse gas emissions and their ease of implementation. The Climate Action Committee will shortlist the long list to the actions for the Climate Action Plan.

CLIMATE ACTION OUTREACH

GREEN ECONOMY WORKSHOP SERIES



Check out this **FREE online workshop series** presented by EnviroCentre and hosted by Valley Heartland CFDC for **eco-minded entrepreneurs** in February.

Each workshop is **up to 2 hours** and includes interactive elements, a Q&A period, and post-workshop resources.

Access to the webinars is free, but **registration is required.**



**Make Green Work for Your Business** Feb 10, 2022 12-1:30 PM ([register](#))

A workshop to help get past the jargon and discover how to make “green” work for your business and take action to reduce your footprint now.

**10 Steps to a Low Carbon Workplace** Feb 17, 2022 12-1:30 PM ([register](#))

An interactive workshop that will provide you with practical tips on reducing your environmental impact in the workplace.

**Retrofitting to Net Zero: Knowing the Landscape** Feb 24, 2022 12-1:30 PM ([register](#))

A workshop for Builders, Renovators and Contractors interested in learning about Net Zero Housing.

**FACEBOOK PAGE**

Lanark County has a Facebook page to provide information on the Climate Action Plan (CAP) and related initiatives surrounding plastics, sustainability, climate, and the environment. Follow the **Lanark County Climate Action Information Page** on Facebook today!

For more information on the CAP please email [climate@lanarkcounty.ca](mailto:climate@lanarkcounty.ca).

---

**LUNCH AND LEARN: CHAMBER OF COMMERCE**

Lanark County provided businesses with information about climate programs and initiatives during a webinar hosted in collaboration with the Carleton Place Chamber of Commerce on April 1, 2021. This webinar provided an overview of the Climate Action Plan, sustainably.eco, One Million Trees program, plastic reduction campaign, and reusable bag promotional stickers.

---

**CLIMATE NETWORK LANARK (CNL)**

The [Climate Network Lanark \(CNL\)](#) was established in 2019 by the Lanark County Stewardship Council. CNL is an affiliation of more than 200 people and local organizations promoting climate action in Lanark County and Smiths Falls. CNL has provided information about PCP, assisted with data collection for the county, worked with the county on climate projects, and provided advice for the Climate Action Plan. The county and the Climate Action Committee are working in collaboration with CNL and will continuously throughout the process to develop Lanark County's Climate Action Plan.



## CLIMATE ACTION PROGRAMS

### SUSTAINABLY.ECO

Lanark County has joined the **Sustainably.eco Strategic Associate Program** as part of its climate action strategies. [Sustainably.eco](#) aims to connect conscious businesses and people committed to sustainability by promoting sustainable actions and products through their platform. Businesses can apply for and be awarded for 12 badges upon fulfilling the requirements. Lanark County began with 5 program participants and has since increased memberships to 9.

Current eight (8) members: Top Shelf Distillers, Mississippi Valley Textile Museum, The Good Food Co., The Up Wellness Market, The Granary, Copper Line Alpacas, Natures Apprentice Farm and TWIG.

Lanark County is also a [sustainably.eco member](#). Since starting the program, Lanark County has earned three (3) badges: sustainable transportation, community, and carbon footprint.

### ONE MILLION TREES PROGRAM

This program aims to plant **one million trees in Lanark County** over the next ten years in partnership with the Rideau Valley Conservation Authority (RVCA). Trees are effective in capturing carbon, cleaning the air, and building ecosystems. Planting more trees will aid in reducing greenhouse gas (GHG) emissions.

To date, nearly **140,000 trees** have been planted in Lanark County with 60,000 planted in 2020 and over 75,000 planted in 2021 (see details in table).

[RVCA's tree planting](#) program allows landowners to receive subsidized rates for large tree planting projects. To qualify, landowners must have a minimum of 1 acre and order a minimum of 1000 trees. RVCA provides full-service planting at \$0.15/tree. Contact Ian





January 2022

Cochrane at 613-692-3571 (or 1-800-267-3504 ext. 1120) or [ian.cochrane@rvca.ca](mailto:ian.cochrane@rvca.ca) for more information about RVCA's tree planting program.

YEAR	PLANTING LOCATION	NUMBER OF TREES
<b>2020</b>	Private Property	50,000
	County Forests	10,000
	Tree Giveaway	1,100
<b>2021</b>	Private Property	71,350
	OVRT & Municipal Land	2,700
	Tree Giveaway	3,000
<b>TOTAL</b>		<b>138,150</b>

---

### **LOCAL MUNICIPAL ELECTRIC VEHICLE PROGRAM**

Electric vehicles offer a great solution to a greener, cleaner future. Electric vehicles have the potential to reduce greenhouse gas (GHG) emissions by up to 90% compared to vehicles that use fossil fuels. Lanark County is providing **funding for lower-tier municipalities** to purchase one electric or hybrid vehicle by December 31, 2022.

---

### **INSULATE LANARK**

Properly insulated homes benefit the environment by reducing emissions and decreasing the amount of energy needed for heating. The Insulate Lanark Program provides homeowners with a grant to assist with new insulation projects that improve the condition and energy efficiency of the home. For more information about eligibility or to apply for the program, please visit our [website](#).

## ALTERNATIVE LAND USE SERVICE (ALUS)



**ALUS Lanark is official!** ALUS Canada is providing start up funding for the program in Lanark County. Next steps are to form a Partnership Advisory Committee (PAC) with farmers to make decisions about the program.

The ALUS Lanark program will run in partnership with the **Mississippi and Rideau Valley Conservation Authorities**. The Conservation Authorities act as the lead organization and are building on existing stewardship programs. As a founding partner, Lanark County's role is to help promote the program benefits, future successes, and offer any other support.

The [Alternative Land Use Service \(ALUS\) program](#) helps farmers to produce valuable ecological services on Canadian farmland. The program provides an opportunity to respond to the climate change crisis and help improve ecosystem services on farmland.

ALUS helps farmers and ranchers restore wetlands, reforest, plant windbreaks, install riparian buffers, manage sustainable drainage systems, create pollinator habitat, and establish other ecologically beneficial projects on their properties. ALUS provides per-acre annual payments to ALUS participants to recognize their dedication to managing and maintaining all the ALUS projects on their land.

## CLIMATE ACTION INITIATIVES



### SUSTAINABLE KINGSTON INNOVATION AWARD

Lanark County is one of six organizations, businesses and individuals receiving a **2021 Sustainable Kingston Award** for hard work in mitigating the climate emergency and fostering a culture of sustainability in the community.

January 2022

Lanark County has received the **Sustainable Kingston Innovation Award** for developing a bold climate action plan in partnership with the Federation of Canadian Municipalities and the Partners for Climate Protection Program, and for helping local businesses reduce their carbon footprint by funding sustainably.eco memberships for eight small businesses. For more information about the award please visit Sustainable Kingston's [website](#).



---

### ELECTRIC CORPORATE FLEET

The corporate fleet, which includes gas and diesel vehicles, is the largest source of greenhouse gas emissions within the Lanark County corporation. To reduce these emissions, **Lanark County has committed to replace 16 gas and 3 diesel vehicles with electric vehicles by 2030**. The switch to electric vehicles will be part of Lanark County's Corporate Climate Action Plan to reduce greenhouse gas emissions.



---

### CABINSCAPE PROJECT SINKHOUSE

Lanark County's community services committee approved staff to move forward with a partnership with **Cabinscape**. Cabinscape's Project Sinkhouse proposal is to build **two tiny homes on county-owned land in Perth** that would be energy-efficient and carbon negative thanks to advanced construction methods. Green municipal funding from the Federation of Canadian Municipalities (FCM) will cover most of the development costs. The cost to the County would be less than \$95K for both units that would also help solve the need for more affordable social housing geared to non-senior singles.



---

### LDD MOTH

In October 2021, Lanark County hosted their **second annual LDD Moth Egg Scraping Challenge**. The LDD moth (previously known as the European gypsy moth) is an invasive and destructive pest that severely defoliated trees throughout Lanark County in the summer of 2021. To reduce next year's infestation, the challenge encouraged residents to remove LDD moth egg masses from trees within the community.

January 2022

With the **recent low temperatures**, you might be wondering how the cold will impact the LDD moth. The extended periods of extreme cold temperatures that we are experiencing can **kill LDD moth egg masses** that are above the snow line. However, egg masses that are under the snow line are likely protected from the extreme cold. This means that in the spring, focus on scraping egg masses that are low to the ground, as they are more likely to still be alive.

The LDD moth outbreak was first observed in the western portion of Lanark County. In 2021, the outbreak **expanded across the entire County**. The LDD moth population is expected to collapse over several years due to natural population control from a virus, fungus, and predators. For more information on the LDD moth and what you can do, please visit our [website](#). Below is Ontario Natural Resources and Forestry's [map of areas defoliated by the LDD moth in 2021 across Ontario](#).



**Lymantria dispar dispar 2021**

Areas in Ontario where Lymantria dispar dispar moth caused defoliation

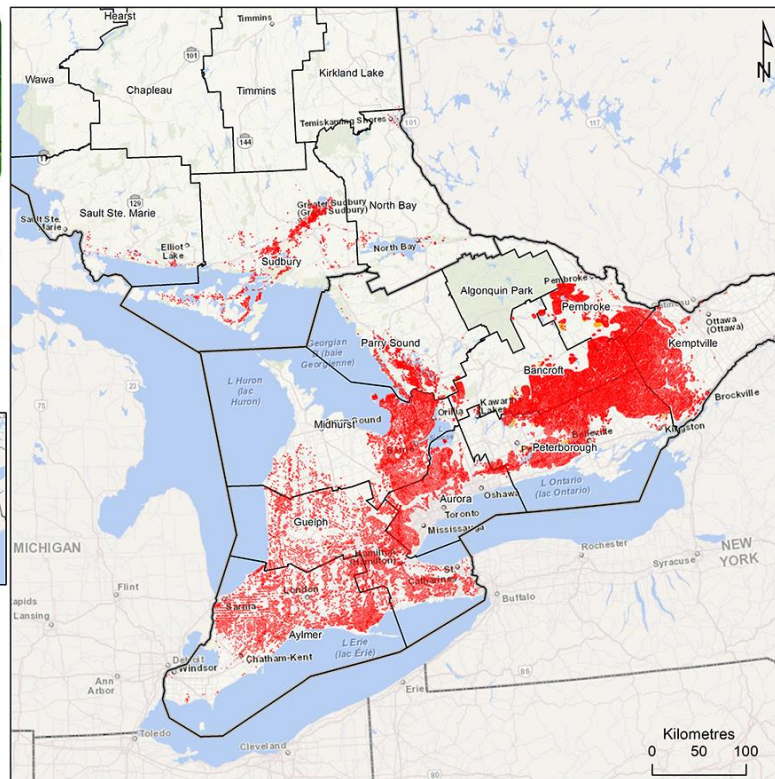
Light = 9,101 ha

Moderate to severe = 1,779,744 ha

- Area of light defoliation
- Area of moderate to severe defoliation



**Disclaimer:**  
This map is illustrative only. Do not rely on this map as being a precise indicator of routes, locations of features, nor as a guide to navigation. This map was produced by the Ministry of Northern Development, Mines, Natural Resources and Forestry.






## FOODCYCLER

**FoodCycler** is a fast-acting countertop composter, which transforms a bucket of food waste into soil in one cycle in approximately three hours. [FoodCycler](#) is an energy-efficient tool for diverting food waste from the solid waste stream. Lanark County is investigating a county-wide pilot program as part of the Climate Action Plan, while Carleton Place and Smiths Falls are moving forward with a pilot program.

## PLASTIC REDUCTION



Lanark County has **banned plastic bags and straws**. The ban started July 1st, 2021 but, during the pandemic compliance is voluntary. A complete plastic bag and straw ban will align with the [Federal Government's single use plastic ban](#). The Federal government recently announced that the ban will come into effect **sometime in 2022**. The Federal single use plastic ban will include plastic bags, straws, stir sticks, six-pack rings, cutlery and food ware as part of their plan to achieve [zero plastic waste](#) by 2030.

The **draft regulations for the Federal single use plastic ban** were recently released and are open for comments. If you're concerned about single use plastics in Canada and would like to have your voice heard, you can [comment on the draft regulations](#) until **March 5<sup>th</sup>, 2022**.

In January 2022, Lanark County launched **No Plastic January** on Lanark County's Climate Action Information Facebook page. Tips were shared on how to reduce plastic at home, at the store, at work and at school. People were asked to pick 1 plastic item to refuse for the month of January and use [10,000 Changes](#) to make a commitment and learn about ways to switch habits and reduce plastic waste.

### Some easy commitments you can make:

- Use reusable bags at the grocery store
- Buy bulk foods to eliminate unnecessary plastic packaging
- Use a travel mug for your coffee

January 2022

In February and March 2021, Lanark County launched a **Plastic Reduction Campaign**, aimed to provide education and awareness about the negative effects of single use plastics. The campaign was launched on Lanark County's Climate Action Information Page on Facebook. You can support the campaign by sharing posts and following our Facebook page.

---

### **BRING YOUR REUSABLE BAG (BYRB) STICKER**

Lanark County is providing interested businesses with a free bring your reusable bag (BYRB) sticker. This window sticker can be placed on businesses windows or doors to remind customers to bring their reusable bags when shopping. The BYRB sticker promotes the use of plastic alternatives to help reduce the amount of single-use plastic bags being used in Lanark County. To receive a free BYRB window sticker, email [climate@lanarkcounty.ca](mailto:climate@lanarkcounty.ca).

---

### **VEGETATION MANAGEMENT POLLINATOR HABITAT**

As part of Lanark County's [Integrated Vegetation Management Plan](#), Lanark County is promoting and restoring native pollinator habitat to roadsides following wild parsnip eradication. Native plants have much deeper roots that store more carbon on roadsides than traditional turf grasses. Promoting pollinator habitat on roadsides benefits pollinators, stores more carbon in the soil and builds climate resiliency.

---

### **BICYCLE MONTH**

Lanark County promotes active transportation throughout the month of June by participating in Bicycle Month. Promoting biking more frequently encourages citizens to choose a healthier and greener mode of transportation that improves physical and mental health. Lanark County participates in the [Silver Chain Challenge](#) during the month of June. Citizens can enter their kilometres biked to show how active we are as a community and to compete with neighbouring municipalities across Eastern Ontario.