

# Modular Bridges

## What is a Modular Panel Bridge?

- A Modular Bridge is fabricated in modules that can be installed quickly in the field
- Components are prefabricated, delivered to site, assembled on site, and then installed on prepared abutments
- These bridges can use a variety of superstructure types such as trusses, plate girders or rolled girders



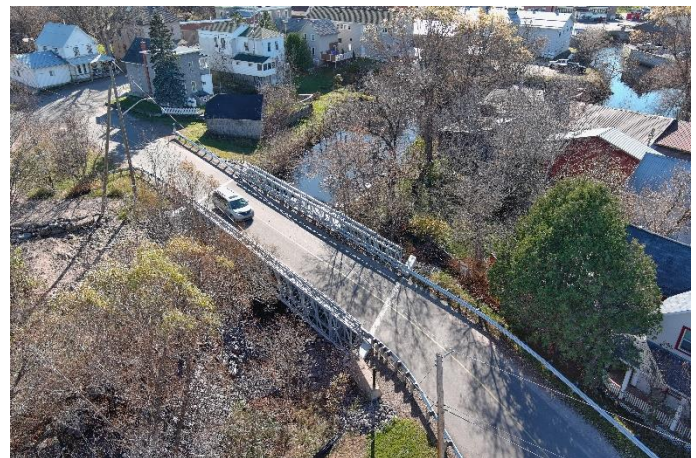
*Port Hope, Ontario*



*Lanark Highlands, Ontario (French Line)*



*Northern Ontario*



*Killaloe, Ontario*

# Modular Bridges

## Benefits of a modular panel bridge?

### 1. Accelerated Construction:

- Shortened bridge project delivery time resulting in a comparatively short disruption in service. This saves time and money throughout the process by completing the project as quickly as possible.
- Components easily transported, even to remote or challenging locations

### 2. Reduced Construction Impact on Traffic:

- Reduced delays to everyday drivers, emergency vehicles, local businesses, bussing, waste collection etc.

### 3. Increased Work-Zone Safety:

- With prefabricated parts and a plan to easily construct the bridge, there is less time spent with changes in traffic patterns. Additionally, it's beneficial for workers on site.

### 4. Quality:

- Prefabricated bridge components are engineered and manufactured specifically for the specified bridge. Thus, these parts are fabricated in a controlled environment and go through a thorough quality control process to ensure they are ready for on-site construction minimizing the risk of unforeseen circumstances causing delays
- Use of bolted connections offers improved fatigue performance, allowing for lighter weight members.

### 5. Lower Environmental Impact:

- Another plus to shorter construction time is the significantly reduced impact on the environment. With less time with heavy equipment on-site and limited construction taking place in or around water, the impact to the surrounding environment is significantly reduced. As a result, building accelerated bridge construction lends itself to environmentally-sensitive areas.
- Manufactured with 100% recyclable high-quality steel.

### 6. Cost:

- Lower construction cost compared to traditional concrete bridge of similar size
- Pre-Engineered solutions reducing design fees.