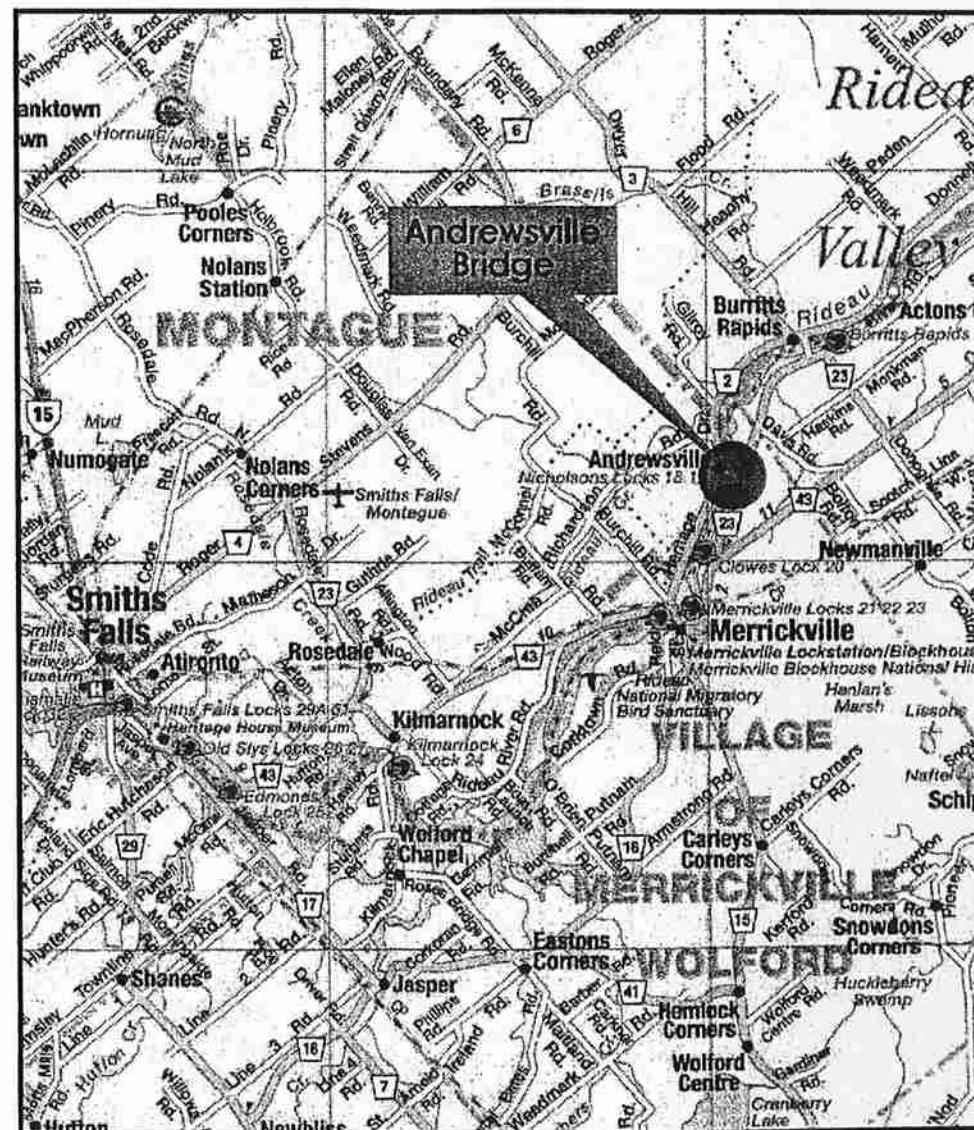


LANARK
COUNTY



S. ALLAN, P.ENG.
DIRECTOR OF PUBLIC WORKS

JANUARY 2008



McCORMICK RANKIN
CORPORATION

ANDREWSVILLE BRIDGE REHABILITATION
STRUCTURE No. 015-0013
CONTRACT No. PW-9-2008

METRIC
DIMENSIONS ARE IN METRES
AND/OR MILLIMETRES
UNLESS OTHERWISE SHOWN

GENERAL NOTES

1. CLASS OF CONCRETE

CLASS OF CONCRETE SHALL BE 30 MPa.

2. CLEAR COVER TO REINFORCING STEEL

FOOTINGS. 100 ±25
DECK TOP. 70 ±20
BOTTOM. 40 ±10
REMAINDER - UNLESS OTHERWISE NOTED. 70 ±20

3. STRUCTURAL STEEL

ALL STRUCTURAL STEEL SHALL CONFORM TO CSA STANDARD CAN/CSA - G40.21-M92. STRUCTURAL STEEL SHALL BE GRADE 350

ROLLED SECTIONS SHALL CONFORM TO CSA STANDARD CAN/CSA - G40-M92 OR ASTM SPECIFICATION A588.

BOLTS SHALL BE ASTM A325M TYPE 1, M22. BOLT THREADS SHALL BE EXCLUDED FROM THE SHEAR PLANES OF STRUCTURAL STEEL

THREADED ROD SHALL BE ASTM A307.

4. TIMBER

DECK TIMBER SHALL BE S-P-F No. 2 OR BETTER.

ALL S-P-F SHALL BE PRESERVATIVE TREATED IN ACCORDANCE WITH CSA STANDARD CAN/CSA 088-M02.

CURB TIMBER SHALL BE D.Fr-L No. 2 OR BETTER.

NAILS, SCREWS AND LAG BOLTS SHALL CONFORM TO CSA STANDARD CAN/CSA - B111-03

NAILING CLIPS SHALL CONFORM TO CSA STANDARD CAN/CSA - G40.21-M92, GRADE 300

NAILS, SCREWS, LAG BOLTS AND NAILING CLIPS SHALL BE HOT DIP GALVANIZED IN ACCORDANCE WITH CA/CSA - G164-M03

5. CONSTRUCTION NOTES

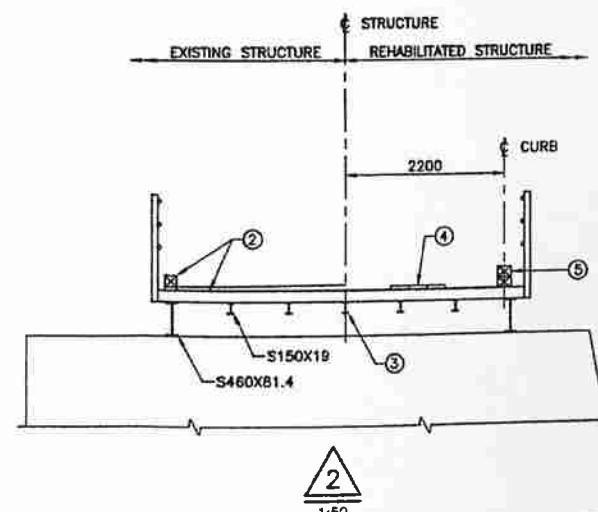
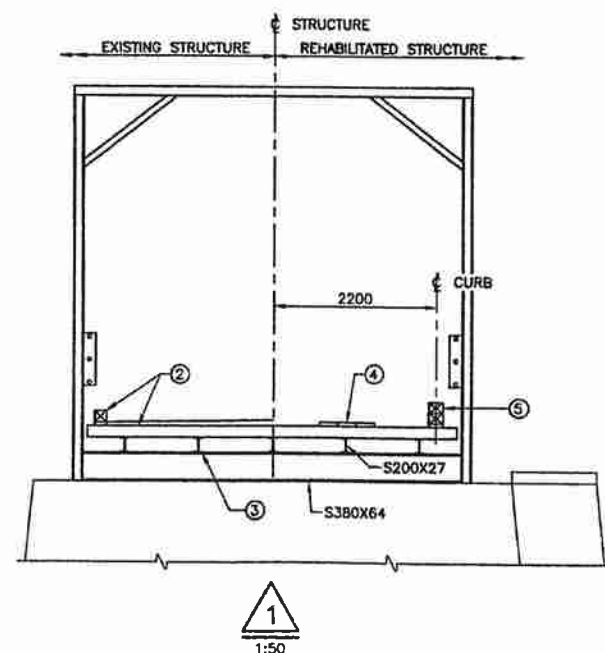
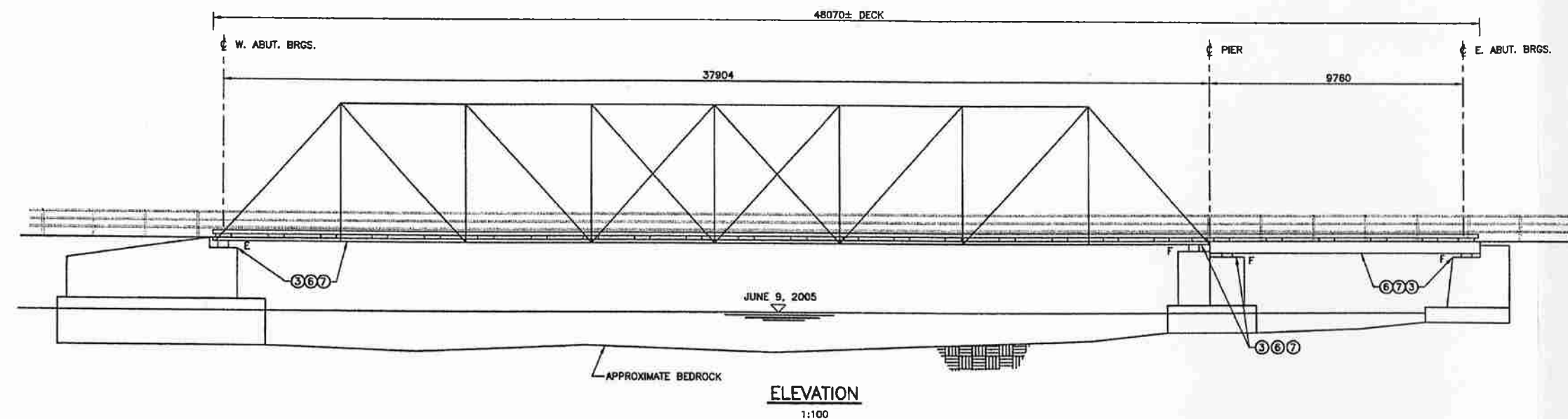
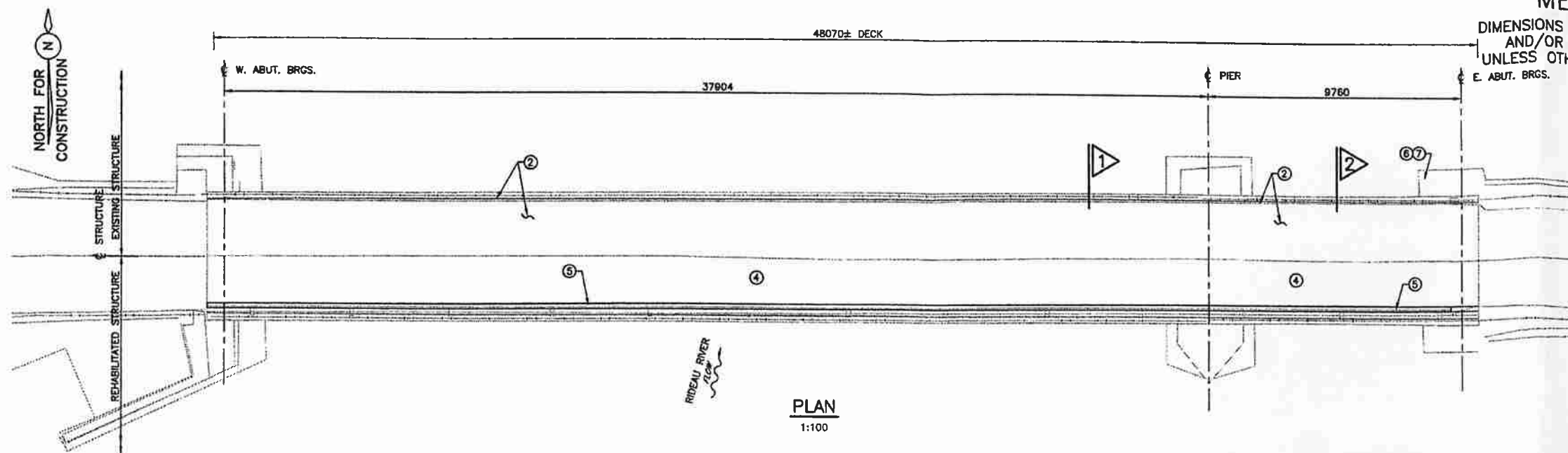
DIMENSIONS ARE APPROXIMATE ONLY. THE CONTRACTOR SHALL VERIFY EXISTING DIMENSIONS PRIOR TO COMMENCEMENT OF WORK AND REPORT ANY DISCREPANCIES TO THE ENGINEER.

EXISTING STRUCTURE IS LOAD POSTED FOR 5 TONNES GVW.

SCOPE OF WORK

- ERECT TRAFFIC SIGNAGE AS INDICATED IN CONTRACT DOCUMENTS.
- REMOVE EXISTING ASPHALT WEARING SURFACE, TIMBER CURB AND TIMBER DECK.
- STRENGTHEN / REPLACE DETERIORATED STEEL.
- CONSTRUCT TIMBER DECK AND WEARING SURFACE.
- INSTALL TIMBER CURB.
- REMOVE DETERIORATED CONCRETE FROM SUBSTRUCTURE AS DIRECTED BY THE ENGINEER.
- REPAIR CONCRETE IN SUBSTRUCTURE USING LOW PRESSURE "FORM AND PUMP" TECHNIQUES.

REVISIONS		DESCRIPTION			
DESIGN	WRB	CHK	MV	CODE	CHBDC2006 LOAD
DRAWN	SH	CHK	WRB	SITE	015-0013/STRUCT
				SCHEME	DWG S1
				DATE	DEC 07



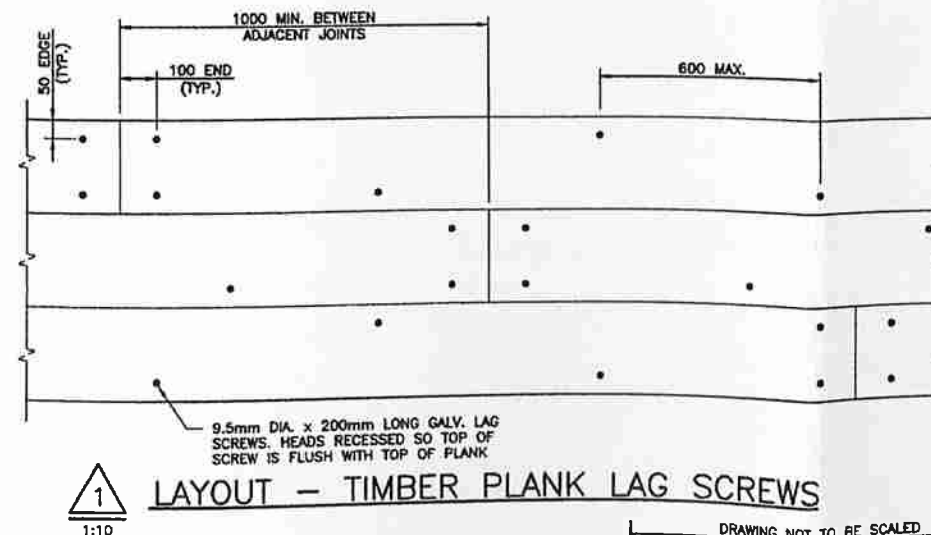
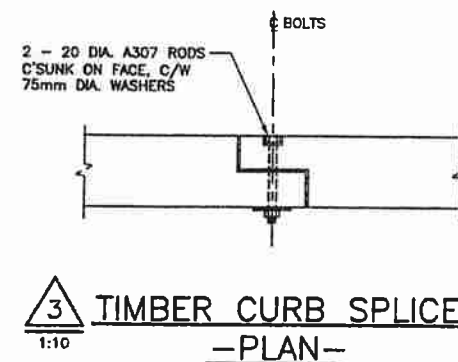
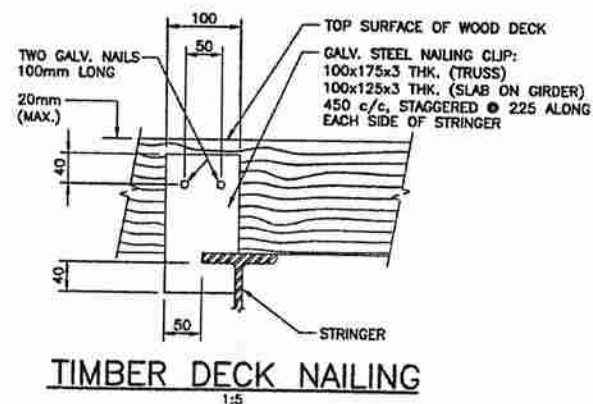
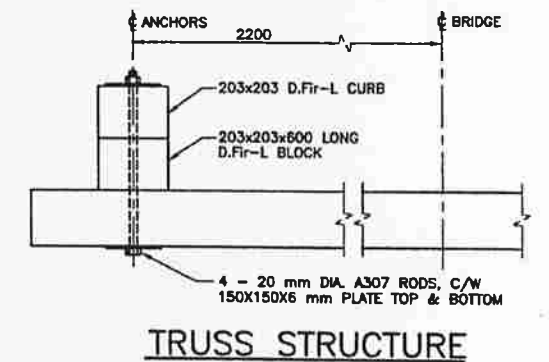
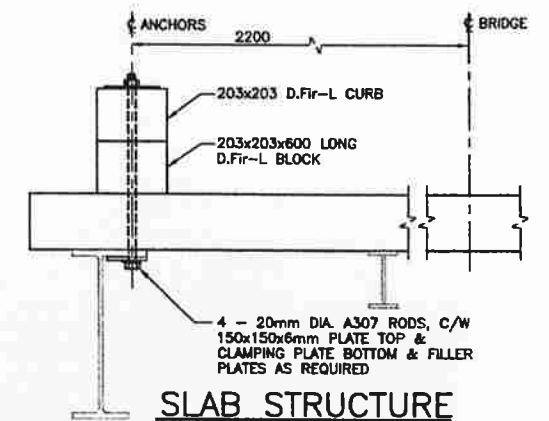
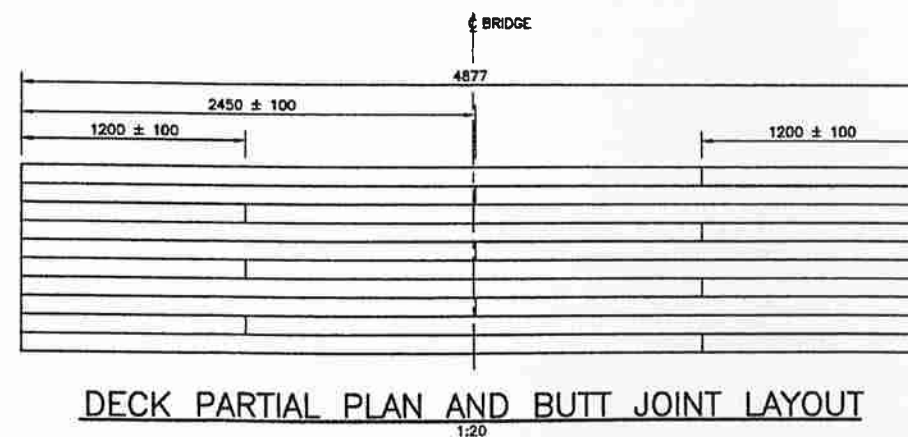
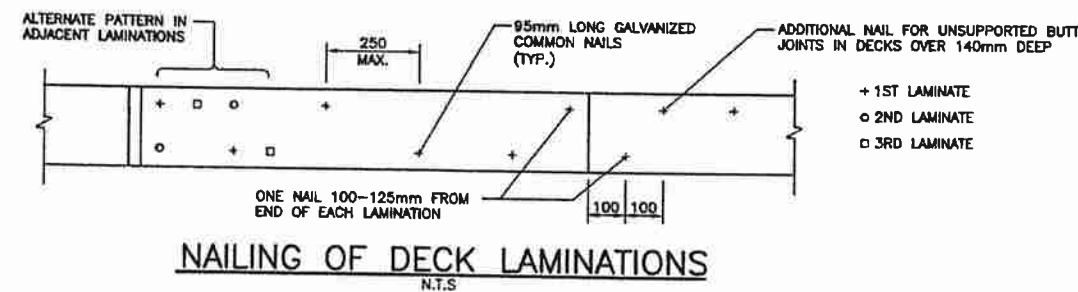
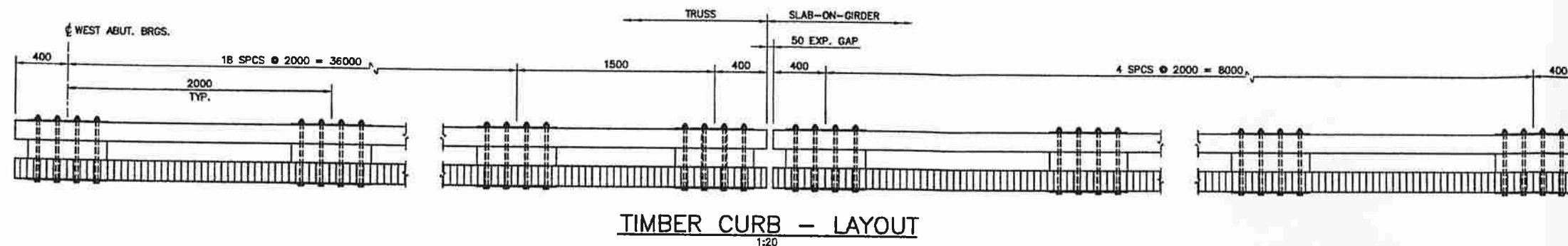
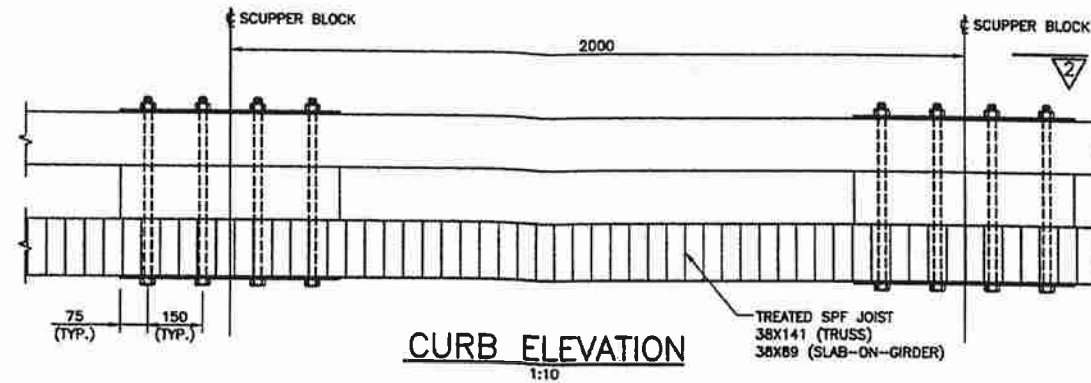
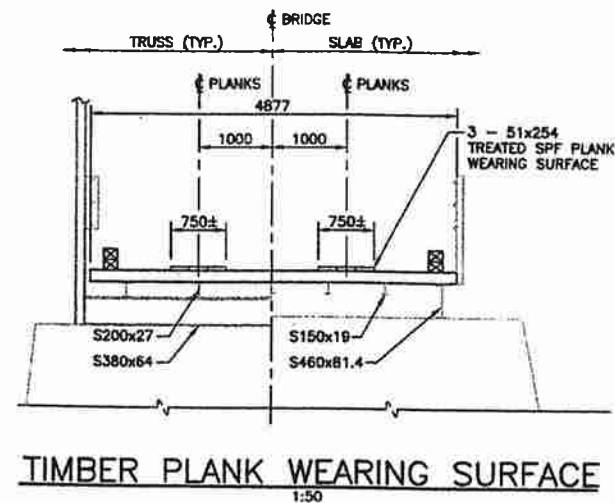
DRAWING NOT TO BE SCALED
100mm ON ORIGINAL DRAWING

METRIC
DIMENSIONS ARE IN METRES
AND/OR MILLIMETRES
UNLESS OTHERWISE SHOWN

LANARK COUNTY		SHEET 2
COUNTY OF LANARK ANDREWSVILLE BRIDGE REHABILITATION		
TIMBER DECK AND CURB DETAILS		
MCCORMICK RANKIN CORPORATION		

NOTES

1. FOR GENERAL NOTES, SEE DWG. No. S1.

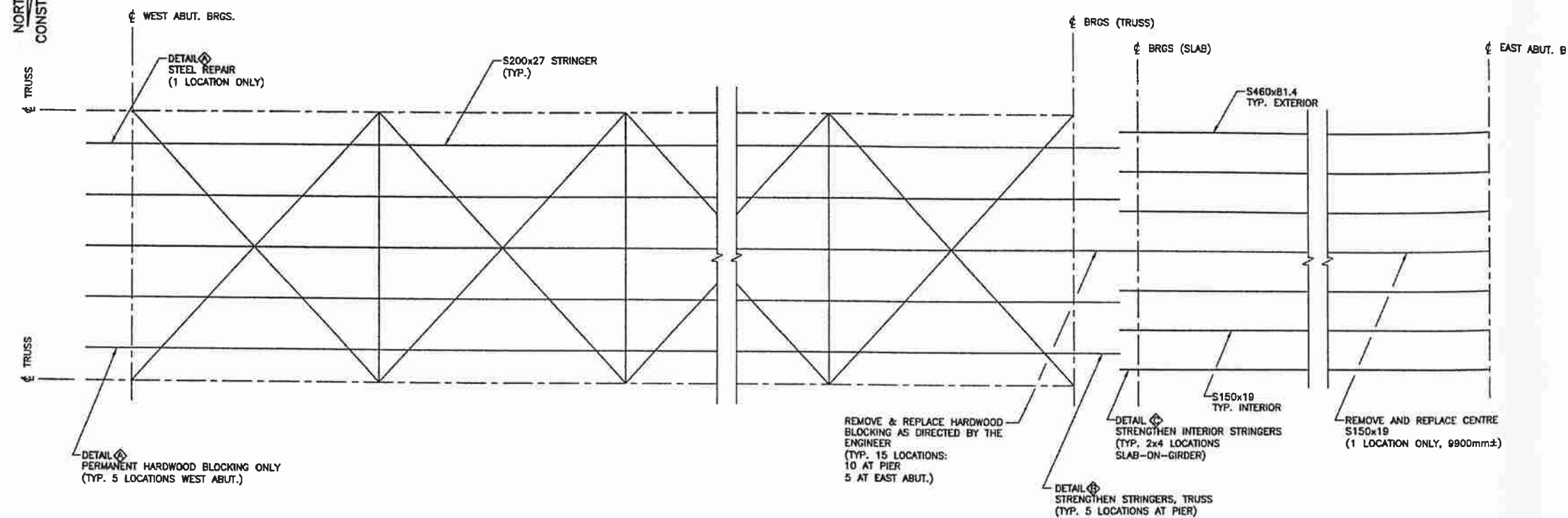


DRAWING NOT TO BE SCALED
100mm ON ORIGINAL DRAWING

REVISIONS	DESCRIPTION
DESIGN WRB	CHK MV
DRAWN SH	CHK WRB
DATE NOV 07	SCHEME DWG S2

METRIC
DIMENSIONS ARE IN METRES
AND/OR MILLIMETRES
UNLESS OTHERWISE SHOWN

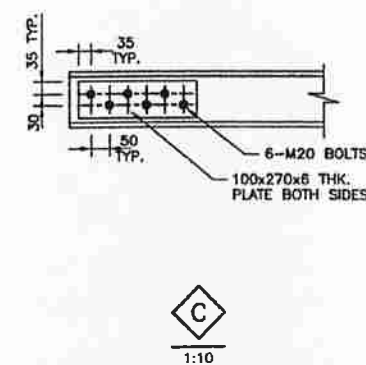
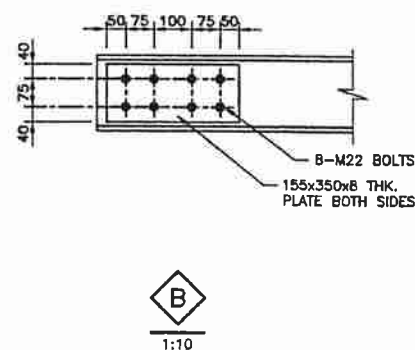
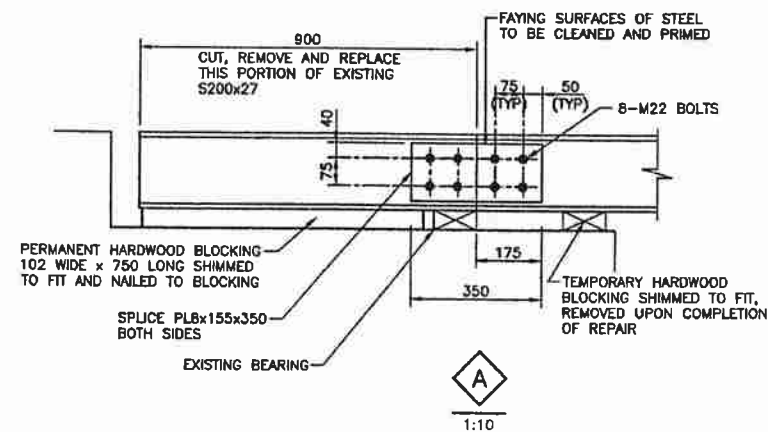
NORTH FOR
CONSTRUCTION



PLAN - FLOOR SYSTEM
1:50

NOTES

- SEE DWG No. S1 FOR GENERAL NOTES.
- FAYING SURFACES OF EXISTING AND NEW STEEL TO BE POWER TOOL CLEANED TO BARE METAL (SSPC SP3) AND PRIMED WITH A ZINC RICH PRIMER. PRIMER SHALL BE SELECTED FROM MTO DESIGNATED SOURCES FOR MATERIALS.
- BOLTS FOR STRINGER REPAIRS TO BE TIGHTENED USING THE "TURN OF THE NUT" METHOD.
- TEMPORARY HARDWOOD BLOCKING TO BE IN PLACE PRIOR TO STEEL REPAIRS AT WEST ABUTMENT, AND TO BE REMOVED UPON COMPLETION OF REPAIRS.
- ALL NEW PERMANENT HARDWOOD BLOCKING TO BE INSTALLED PRIOR TO REOPENING BRIDGE TO TRAFFIC.



DRAWING NOT TO BE SCALED
100mm ON ORIGINAL DRAWING

REVISIONS	DESCRIPTION	DATE
DESIGN WRB	CHK MV	CODE CHBDC2006 LOAD
DRAWN SH	CHK WRB	SITE 015-0013/STRUCT
		SCHEME
		DWG S3