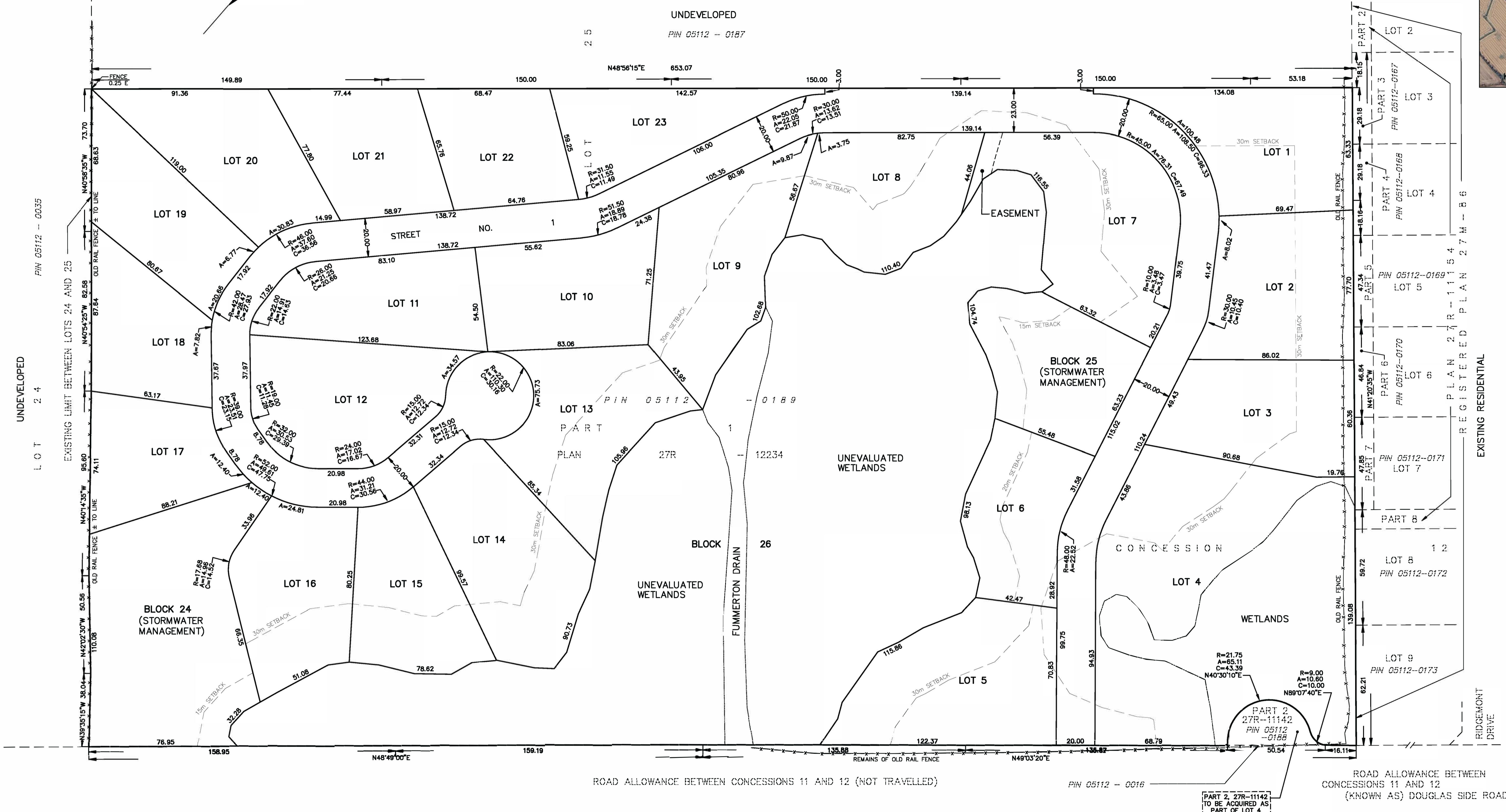
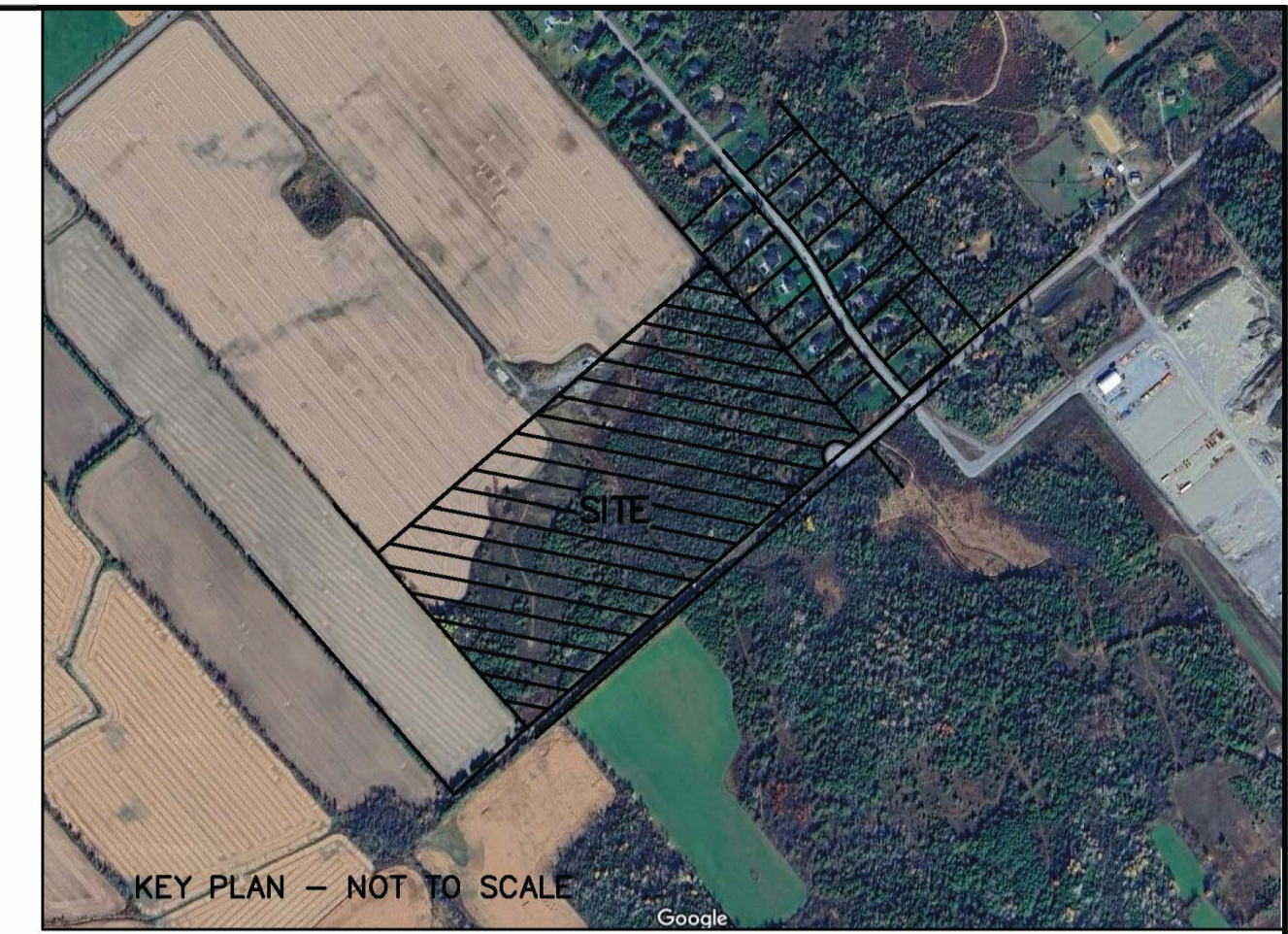
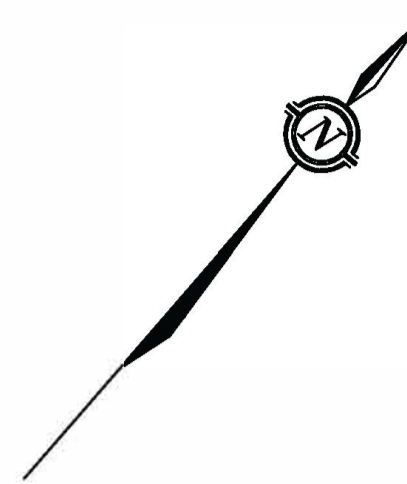


METRIC
DISTANCES AND ELEVATIONS SHOWN ON THIS PLAN ARE IN METRES
AND CAN BE CONVERTED TO FEET BY DIVIDING BY 0.3048



**DRAFT PLAN OF SUBDIVISION OF
PART OF LOT 25
CONCESSION 12
TOWNSHIP OF BECKWITH
COUNTY OF LANARK**

SCALE 1 : 1000
0 10 20 50 100 metres
FAIRHALL, MOFFATT & WOODLAND LIMITED
ONTARIO LAND SURVEYORS

OWNER'S AUTHORIZATION

I HEREBY AUTHORIZE THE SUBMISSION OF THIS PLAN FOR APPROVAL

DOUGLAS LANDING DEVELOPMENTS

DATE _____ DR. GILLIAN ESPIE (PRESIDENT)

SURVEYOR'S CERTIFICATE

I HEREBY CERTIFY THAT THE BOUNDARIES OF THE LANDS TO BE SUBDIVIDED AS SHOWN ON THIS PLAN AND THEIR RELATIONSHIP TO ADJOINING LANDS ARE ACCURATELY AND CORRECTLY SHOWN.

DATE _____ JOHN H. GUTRI (ONTARIO LAND SURVEYOR)

SECTION 51 (17) OF THE PLANNING ACT.

- a) SHOWN ON PLAN
- b) SHOWN ON PLAN
- c) SHOWN ON PLAN
- d) 23 LOTS FOR SINGLE FAMILY HOMES (2 STOREYS EACH) WETLAND STORMWATER MANAGEMENT
- e) SHOWN ON PLAN
- f) SHOWN ON PLAN
- g) SHOWN ON PROJECT SITE PLAN
- h) WATER SUPPLY WILL BE FROM WELLS AS SHOWN ON CONCEPT PLAN BY P2 CONCEPTS DATED SEP. 5, 2025. ALSO SEE HYDROLOGICAL REPORT BY PINCHIN LTD. DATED SEP 22 2025.
- i) SEE GEOTECHNICAL INVESTIGATION REPORT BY PINCHIN LTD. DATED 2025.
- j) SEE GRADING AND DRAINAGE PLAN BY TATHAM ENGINEERING LIMITED DATED SEP 23, 2025.
- k) FIRE PROTECTION, POLICING AND GARBAGE COLLECTION ARE AVAILABLE.
- l) NONE REGISTERED

SITE AREA = 22.181 Ha.

Fairhall Moffatt & Woodland LIMITED ONARIO LAND SURVEYORS Surveying and Land Information Services 100-800 TERRY FOX DRIVE, KANATA, ONTARIO K2L 4B6 TEL: (613) 591-2266 FAX: (613) 591-1495 www.fmw.com.on.ca	JOB No. AC13300
	REFERENCE No. E 337908, N 5004285
	REFERENCE No. 226 - 12 BECKWITH
	FILE No. s:\065\AC13300\PROJ\ac133_draft-plan.dwg (kg)